

The following presentation was given at:

SCAF Vendor & Service Provider Day

Tuesday 14th November 2017

The BAWA Centre, Filton, Bristol, BS34 7RG

Released for distribution by the Author

www.scaf.org.uk/library



Risk Analysis for Real

*Roger Garrini
and*

Trevor Jay

trevor.jay@riskdecisions.com

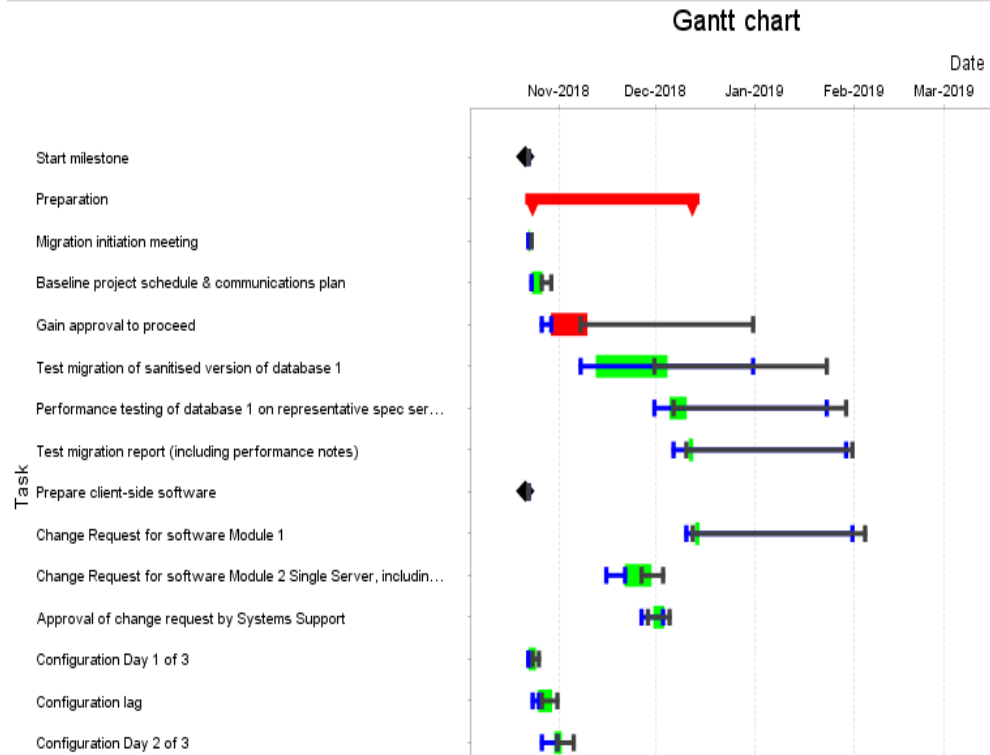
07595 206805

- Large aircraft project
- Acting as sub-sub-contractor
- Intense political scenario
- Who is the first to declare lateness

- I've promised we will do a 3 point estimate to show we are not the critical path
- is that OK?
- Consequential damages mentioned

Plan

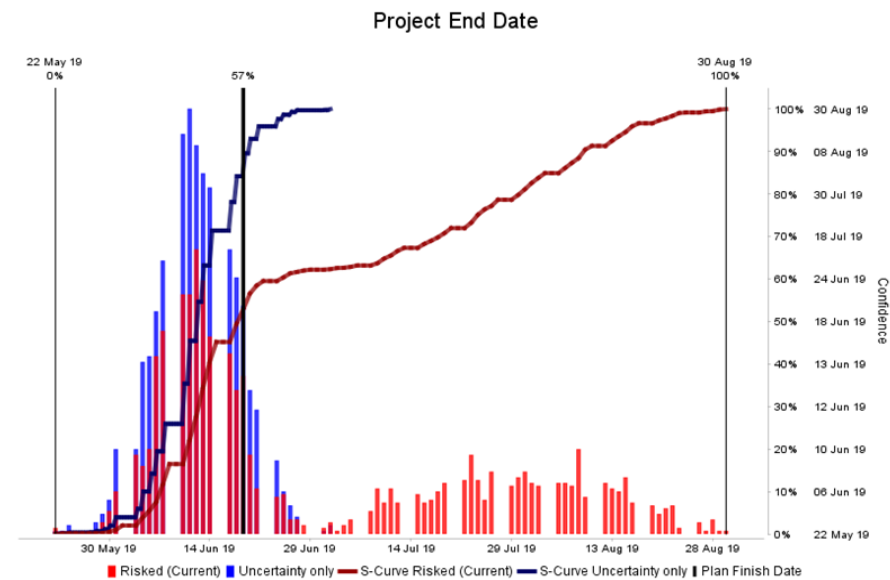
- Deliver a software driven box to act as controller for sub-system
- 3 months left to acceptance test date
- First task create a risk schedule for analysis
- Surprising results show documentation is the critical path
 - 60 day review from last document before testing can start



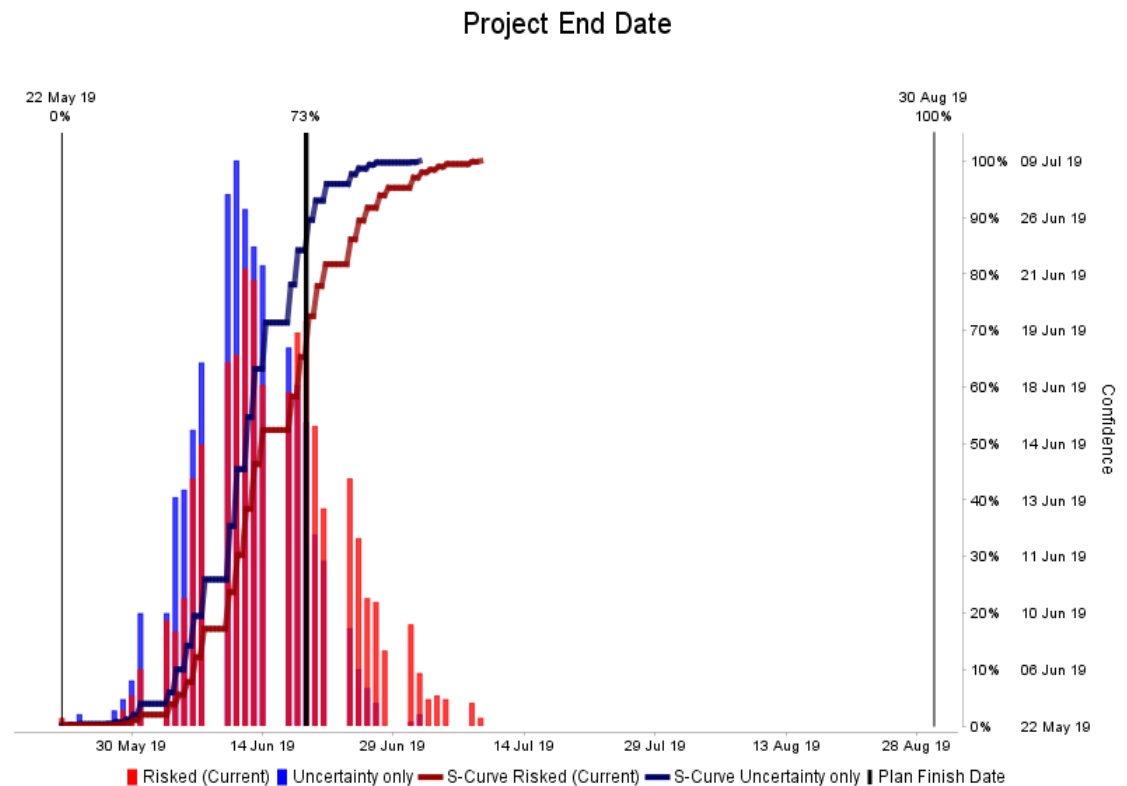
- Add in to the schedule 3 point estimates for time
- First pass 3 months late
- Change logic and ask the immediate customer to change their demand for documents
- Agreed documents will be agreed in parallel when individually available and given priority

Add risks

- Single critical failure
 - Customer supplied test fixture
 - 14 month lead time for repairs
 - Analysis suggest 1 year delay likely (50%)
- Suggested transfer of risk to customer
 - Accepted
- Change Logic on plan and risks



- Now analysed plan and measured critical path(s)
- Additional resource into plan to reduce activity duration
- Analysis suggests plan now feasible
 - 90% prediction now just makes it



- Team achieved 10% dates
- Early delivery and acceptance
- Support contract started early

Example 2

- Major modification to complex system
- Examined schedule for each sub-system
- Several surprising critical paths
 - Changed logic
 - Changed priorities

Example 3

- Large programme
- Created large risk network 200 activities across 30 platforms
- Added 400 risks
- Analysis showed how much float was needed
- Generated new target dates for subcontractors

Example 4

- How did you get here today?
- Did you allow for travel risks
 - SatNav/ radio
 - New road works
 - Queue in the car park
 - 90% of you did
 - 50% early?
- Risk analysis
 - you know it makes sense